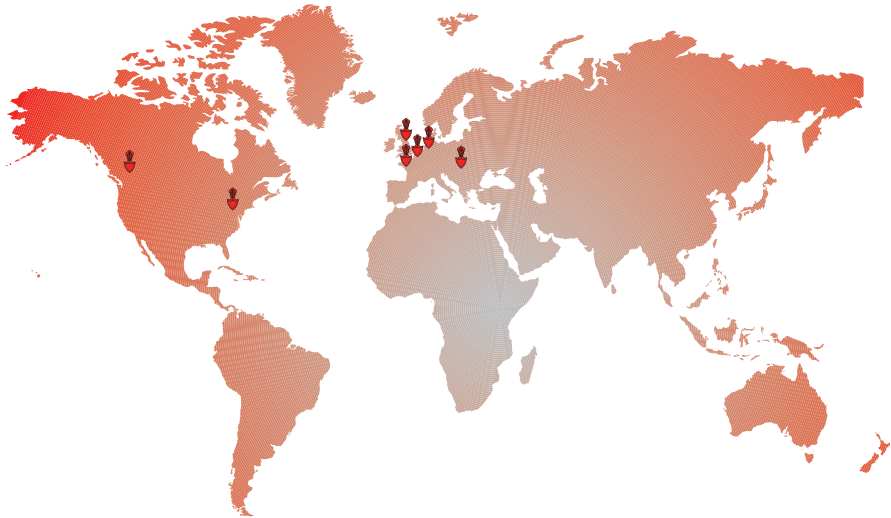


High-Performance Solutions and Compounds
for Roofing and Structural Waterproofing



IKO is a worldwide enterprise, with more than 3000 employees, and manufacturing plants in Canada, the United States, United Kingdom, Belgium, Holland, France and Slovakia. The company's operations ships products to 96 countries around the globe.



The IKO Group

Despite tremendous growth, IKO has also remained firmly rooted in its family values of entrepreneurial spirit, craftsmanship and innovation. The company maintains the fierce independence of its founder, and his belief of the importance of controlling the raw materials used in its manufacturing process.

IKO also strives to back the best products in the industry with the best service. The IKO family includes not just the ownership, but the thousands of dedicated employees across its global operations who share the company's ideals of craftsmanship, attention to detail and world class service for our customers. The commitment of IKO's employees is the key pillar in the company's success in today's competitive marketplace.

The ultimate proof of the company's commitment to quality and innovation is its own success. From humble beginnings to a modern manufacturer with global reach, IKO has remained committed to the values that were the foundation of the business envisioned by our founder, Israel Koschitzky. That combination of old-time values, combined with cutting edge technology and innovation, means IKO will continue to Set the Standard both now and in the future.

IKO in the UK

In the UK, the IKO name has become synonymous with delivering dependable waterproofing solutions backed by supreme levels of customer service. This hard earned reputation has been built on a foundation of quality and an ethos of customer service which permeates through the organisation and remains as strong today as it did 100 years ago.

The rewards speak for themselves. IKO PLC is now well established as the UK market leader in the design, manufacture and installation of roofing and waterproofing systems. With this enviable position comes an unwavering commitment and responsibility to continue investing in new product solutions, new manufacturing facilities and the industry's largest team of people, all dedicated to achieving excellence at every level.



The IKOpro Portfolio

Liquid applied waterproofing is ideal for use in a number of areas including roof renovation, general building maintenance and structural waterproofing.

The IKOpro liquids range includes primers, adhesives and a wide choice of repair and waterproofing coatings and protective paints. This brochure summarises the range and provides an overview of key features.

Please refer to packaging or technical datasheets for full application instructions.





Preparation of Substrate

All you need to prepare and prime surfaces prior to the application of waterproofing materials.

IKOpro Quick Dry Bitumen Primer	6
IKOpro Self-Adhesive Bitumen Primer	7
IKOpro IKO Easyseal Bonding Agent	8
IKOpro Algae and Fungi Remover	9

Adhesion

Essential components for bonding roofing felts and chippings, to ensure sound waterproofing.

IKOpro High-Performance Roofing Felt Adhesive	10
IKOpro High-Performance Felt Lap Adhesive	11

Repair & Waterproofing

A wide range of solutions to repair and care for roofs, including emergency solutions.

IKOpro Acrylic Roof Coat System	12
IKOpro Acrylic Roof Repair Cartridge	13
IKOpro Universal Flat Roof Renovator	14
IKOpro Super Elastic Roof Coat	15
IKOpro Roof & Gutter Repair Mastic	16
IKOpro Universal Roof Repair Compound	17
IKOpro Emergency Roof Repair	18
IKOpro Rapid Repair Spray	19
IKOpro Roofcryn	20
IKOpro Solvent Free Waterproofer	21
IKOpro Stickall	22

Finish & Protection

A selection of products to protect and weatherproof external surfaces plus high-performance liquid damp proofing products.

IKOpro High-Performance Waterseal	23
IKOpro Solar Reflective Aluminium Paint	24
IKOpro Black Bitumen Paint	25
IKOpro Synthaprufe Original	26
IKOpro Synthaprufe LAC	27
IKOpro Synthaprufe Trade	28
IKOpro Paving & Patio Protector	29
IKOpro Roof Protector	30

Preparation of Substrate

IKOpro Quick Dry Bitumen Primer

To prepare and stabilise surfaces prior to applying bitumen membranes and flashing tapes.

IKOpro Quick Dry Bitumen Primer is a bituminous priming solution for stabilising dusty and porous surfaces prior to the application of bitumen roofing and waterproofing products. It dries in approximately 30 minutes, with no residual tack.

When used in conjunction with **IKOpro Roofing Felt Adhesive** (pg 10), the bond between the substrate and the waterproofing material being applied is significantly improved and helps ensure a long-term, watertight finish.



30 minutes
Quick Dry



Use

- May be applied to many substrates including concrete, brickwork, zinc, metal, and existing bituminous roofing
- For use with bituminous membranes and liquid IKOpro maintenance products.

Application

- All surfaces should be clean, dry and free from grease, oil, dirt and loose material
- Ready for use and should not be thinned
- Apply an even coating with a brush or roller, working well into the surface
- Allow the primer to dry thoroughly (approx. 30 minutes at 20°C, dependent on weather conditions and surface porosity)
- Keep the primed surface dust free prior to application of subsequent waterproofing membranes
- Do not apply when surface temperature is below 5°C.

Coverage

- Metal, 10-15 m²/litre
- Concrete, 3-4 m²/litre
- Bituminous roofing, approximately 5 m²/litre



Product	Size	Code
IKOpro Quick Dry Bitumen Primer	2.5L	MW646402
	5L	MW646405
	25L	MW646408

IKOpro Self-Adhesive Bitumen Primer

Bitumen primer for self-adhesive membranes.

IKOpro Self-Adhesive Bitumen Primer is a fast-drying, rubber modified, bituminous priming solution designed to seal and prepare surfaces prior to the application of IKO self-adhesive roofing and waterproofing membranes. Drying time is approximately 1 hour depending on the substrate and the weather conditions.

It is ideal for ensuring a long-term bond between the substrate and subsequent self-adhesive bitumen membranes being applied.



Use

- May be applied to many substrates including concrete, wood, brickwork and metal
- For use prior to installation of IKO self-adhesive membranes.

Application

- All surfaces should be clean, dry and free from grease, oil, dirt and loose material
- Apply by brush
- Only prime the area to be covered with membrane within 4 hours to prevent dust contamination
- Porous surfaces may need two coats.

Coverage

- Metal, 10-15 m²/litre
- Concrete, 3-4 m²/litre
- Bituminous roofing, approximately 5 m²/litre

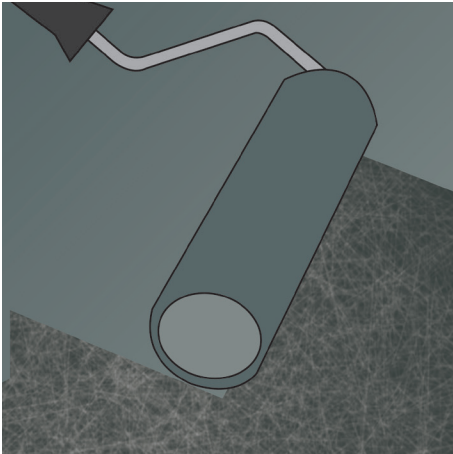
Product	Size	Code
IKOpro Self Adhesive Bitumen Primer	2.5L	MW646412
	5L	MW646415
	25L	MW646419

Preparation of Substrate

IKOpro IKO Easyseal Bonding Agent

Fast drying primer for adhesion of IKO Easyseal Self-Adhesive Bitumen Roofing Membranes

IKOpro IKO Easyseal Bonding Agent is a fast drying primer. The solvent based primer, based on synthetic rubber and resins is specially formulated to activate self-adhesive bitumen roofing membranes to promote a strong bond even at low temperatures.



Use

- With the IKO Easyseal Self-adhesive product range
- For existing roofs

Application

- Metal roofs should be prepared with a wire brush
- The material and the substrate to be bonded must be dry and clean.
- Apply in an even layer by brush or roller.
- Must not be thinned or mixed with other products.
- Only use in dry weather conditions, no moisture must be enclosed between the primer layer and the self-adhesive membrane.
- Apply self-adhesive membranes as soon as possible after the IKOpro IKO Easyseal Bonding Agent is completely dry.
- The minimum application temperature is 5°C.

Coverage

- 3-5m²/litre depending on substrate

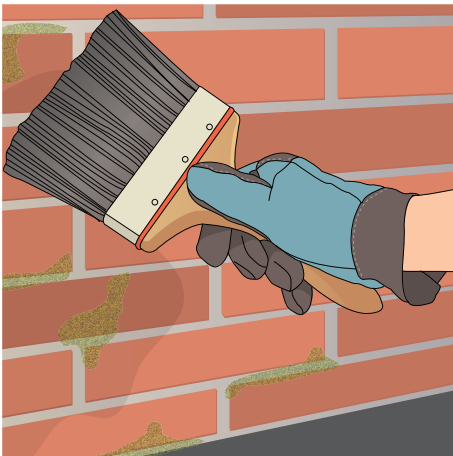
Product	Size	Code
IKOpro IKO Easyseal Bonding Agent	5L	23500005

IKOpro Algae and Fungi Remover

Eliminator of algae and fungi on external surfaces.

IKOpro Algae and Fungi Remover is specially formulated to remove and control lichen, mildew, fungi and algae on a wide range of external surfaces. It is ready to use straight from the container.

IKOpro Algae and Fungi Remover is ideal as a preparation product before applying further IKOpro waterproofing treatments. It has a powerful preventative action, helping to eliminate future moss and lichen growth.



Use

- All outside surfaces such as brickwork, tiles, slates, facades, flooring, glasswork, wood, plastics, bitumen shingles and bituminous roofing.

Application

- Apply IKOpro Algae and Fungi Remover generously over the surface using a brush or spray applicator. (NB. If spraying, take account of the wind conditions to ensure that spray drift does not damage adjacent plants and greenery)
- Allow the product to act until the algae has taken on a greyish black colour
- One application is normally sufficient to give a completely effective treatment, but in cases of persistent growth, repeat the application
- Do not rinse. Remove dead remnants of algae with a stiff broom.

Coverage

- 5-10 m²/litre, depending on the severity of attack.

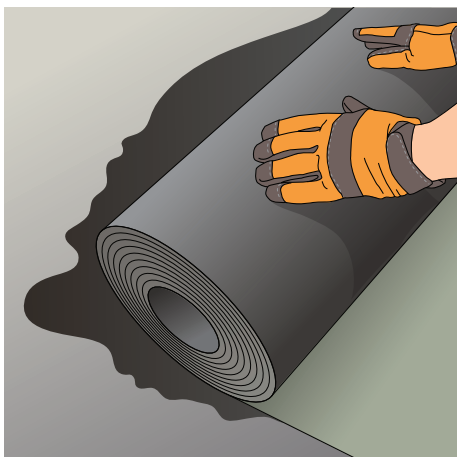
Product	Size	Code
IKOpro Algae and Fungi Remover	2L	MW943302

Adhesion

IKOpro High-Performance Roofing Felt Adhesive

A cold applied bitumen adhesive for bonding and sealing roofing felts.

IKOpro Roofing Felt Adhesive is a bitumen adhesive that enables total bonding of roofing felts without the need for hot bitumen or flames.



Use

- An adhesive for bonding roofing felt to concrete, metal, timber and similar surfaces and for bonding successive layers of roofing felt.

Application

- All surfaces must be clean, dry and free from grease, oil, dirt and loose material
- Apply IKOpro Roofing Felt Adhesive by brush, ensuring an even coating and when tacky (after approximately 15 minutes), roll roofing felt into position and press down firmly
- Porous surfaces may require priming with a coat of **IKOpro Quick Dry Bitumen Primer** (pg 6) and should be allowed to dry before proceeding.

Coverage

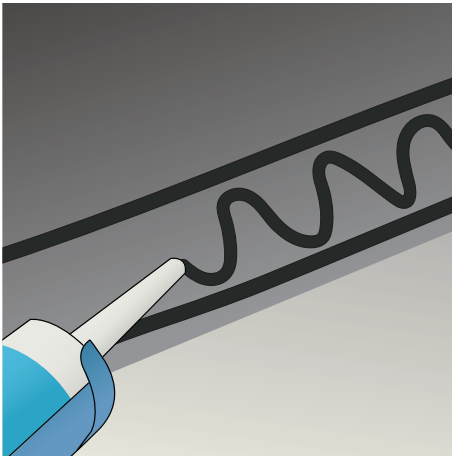
- 1.0 – 1.5 m²/litre depending on substrate and ambient temperature.

Product	Size	Code
IKOpro Roofing Felt Adhesive	1L	MW686231
	2.5L	MW686232
	5L	MW686235
	25L	MW686236

IKOpro High-Performance Felt Lap Adhesive

For sealing roof overlaps and corners on felt and felt roof tiles.

IKOpro High-Performance Felt Lap Adhesive is a cold applied, flexible bitumen adhesive for securing and sealing overlaps of bitumen roofing felt systems.



Use

- For use on bitumen felt roof membranes
- Ideal for sealing laps and completing detailed areas.

Application

- All surfaces must be clean, dry and free from grease, oil, dirt and loose material/mineral
- Score a guideline on the mineral surface of the relevant sheet of felt
- Apply a continuous 5mm bead of sealant to this line and another 100mm to the inside of the line. Join these two beads with a snaking 5mm bead across the width of the lap
- To make the lap, press the overlying sheet into position and roll with a seam roller so that a small amount of sealant is squeezed out to form a visible bead at the edge of the lap.

Coverage

- A 310ml cartridge is sufficient to complete 2 to 3 linear metres of lap joint.

Product	Size	Code
IKOpro Felt Lap Adhesive	310ml	MW676310

Repair & Waterproofing

IKOpro Acrylic Roof Coat System

A liquid-applied, solvent-based and flexible acrylic roof waterproofing system.

IKOpro Acrylic Roof Coat is designed to offer 10 years waterproofing protection to new or existing roof surfaces when reinforced with IKOpro GRF 100gsm fleece and following IKO's specification.

Use

- Can be applied on top of existing waterproofing including asphalt, bituminous felt and concrete
- Single component acrylic used direct from the tin.

Application

- All surfaces must be clean, dry and free from grease, oil, dirt and loose deposits such as leaves, snow or excess water
- Bridge all joints, cracks or splits with the **IKOpro Bridging Tape**
- Apply the IKOpro Acrylic Roof Coat to the prepared surface by roller or brush at the recommended coverage rate
- Lay and overlap pieces of IKOpro GRF 100gsm fleece 50mm at the side and end joints, into the wet coating and apply pressure with a roller, making sure the GRF fleece is fully covered with no air holes and allow to dry for at least 6 to 8 hours
- Apply the top coat by roller or brush at the recommended coverage rate.

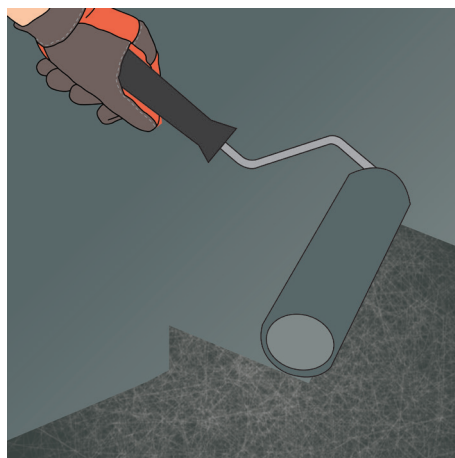
Note: a full system installation guide and video is available from: www.ikogroup.co.uk

Coverage

- First coat; minimum coverage rate: 0.7 litre/m² on smooth surfaces and 1.3 litre/m² on rough surfaces
- Final top coat; minimum coverage rate: 0.5 litre/m².



For more information
scan the QR code



Product	Size	Code
IKOpro Acrylic Roof Coat	20L	02401790
IKOpro GRF 100gsm Mat	25m x 1m	70250001
IKOpro Bridging Tape	45m x 75mm	MW700206

IKOpro Acrylic Roof Repair Cartridge

Flexible acrylic resin waterproofing treatment for roof protection.

IKOpro Acrylic Roof Repair Cartridge is an effective emergency repair for roofs and gutters which can be applied in all weathers. Instant leak repair for roofs, gutters and brickwork.

Use

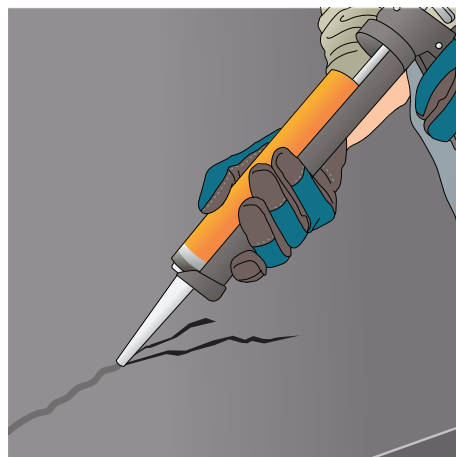
- For use on flat/pitched roofs, chimney stacks, all brickwork and concrete
- Stops leaks instantly and contains fibres to bridge splits and cracks up to 10mm wide
- After drying the treatment remains flexible and does not crack or rupture
- Colour: Grey.

Application

- Surfaces may be damp but clear of standing water
- Apply in temperatures between +5°C and +30°C
- Always wear protective gloves when using this product
- Apply by skeleton gun
- Apply liberally into cracked or onto damaged areas and smooth over with trowel or putty knife
- Work well into damp areas to dispel moisture and ensure good adhesion
- Store in cool dry conditions and away from sources of ignition.

Coverage

- 0.2 m² per cartridge, depending on the depth and severity of the damage to be repaired.



Product	Size	Code
IKOpro Acrylic Roof Repair Cartridge	310ml	MW243816

Repair & Waterproofing

IKOpro Universal Flat Roof Renovator

Seamless waterproof coating to prolong the life of flat roofs.

IKOpro Universal Flat Roof Renovator is a flexible, bituminous coating containing reinforcing fibres and designed for easy application to protect and prolong the life of existing roofing systems.

The ideal solution for protecting and rejuvenating your roof.



Use

- For existing roofs
- Metal roofs should be prepared with a wire brush
- Prime iron and steel with rust inhibitive primer.

Application

- Any blisters and cracks present should be repaired using **IKOpro Roof Repair Compound** (pg 17)
- Stir IKOpro Universal Flat Roof Renovator thoroughly and then apply an even coating using a brush at a rate of 2.5 m²/litre
- Allow product to dry thoroughly (approx 24 hours) and then apply a second coat at right angles to the first at a rate of 2.5 m²/litre
- For additional ultraviolet protection, slate granules or chippings can be immediately sprinkled into the top coat whilst still wet.

Coverage

- 2.5 m²/litre/coat.

Product	Size	Code
IKOpro Flat Roof Renovator	2.5L	MW941500
	5L	MW941600
	22.5L	MW941622

IKOpro Super Elastic Roof Coat

Liquid coating to provide waterproofing for flat and corrugated roofs.

IKOpro Super Elastic Roof Coat is a flexible maintenance coating for protecting and waterproofing roofs. It forms a tough, elastic waterproof skin after drying which is resistant to atmospheric contamination, chemical damage and temperature fluctuations.

IKOpro Super Elastic Roof Coat has exceptional 'self healing' characteristics and is able to repair small scale damage by itself (such as entrapped grains of gravel, chippings etc). It can also be finished with chipping or paving without damage.



Solvent Free



Use

- For flat or corrugated roofs.

Application

- Stir IKOpro Super Elastic Roof Coat thoroughly and then apply an even coating using a brush at a rate of 1 kg/m²
- Any blisters and cracks present should be repaired using **IKOpro Roof Repair Compound** (pg 17)
- Allow to dry for 24 hours before applying a second coat at right angles to the first at a rate of 1 kg/m²
- Weatherproofing is achieved when the initial brown colour has turned completely black. Drying time is approx 4 hours
- IKOpro Super Elastic Roof Coat is not resistant to rain or frost until it has fully dried. Protect from frost in both storage and use. Do not apply if temperature is below 5°C or if rain is expected within the next few hours.

Coverage

- 1 m²/kg/coat.

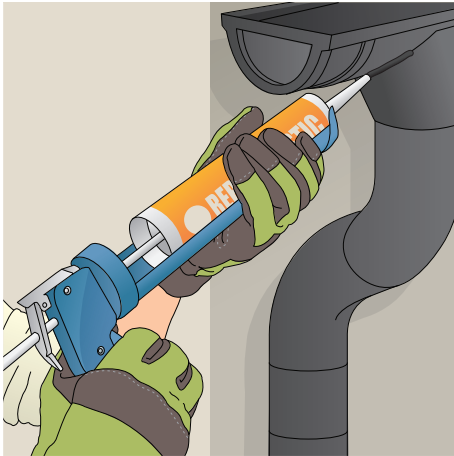
Product	Size	Code
IKOpro Super Elastic Roof Coat	4kg	MW941700

Repair & Waterproofing

IKOpro Roof & Gutter Repair Mastic

Mastic for localised repairs of splits and cracks in roof felt and gutters.

IKOpro Roof & Gutter Repair Mastic is a highly flexible sealing compound which provides a long lasting weatherproof seal.



Use

- For joints in gutters, splits and cracks in roofing sheets, flashings and other similar roofing applications
- Ideal for smaller repair jobs.

Application

- All surfaces must be clean, dry and free from grease, oil, dirt and other contaminants which may impair adhesion
- Apply IKOpro Roof & Gutter Repair Mastic along the joint at a steady speed in order to produce a smooth and evenly filled joint. Use a trowel or filling knife to ensure mastic fills the joint, making sure that all air pockets are eliminated
- Touch-dry in approximately 3 hours.

Coverage

- Depending on application, use approx 8 linear metres per 310ml cartridge with a joint of around 6mm wide by 6mm deep.

Product	Size	Code
IKOpro Roof & Gutter Repair Mastic	310ml	MW942200

IKOpro Universal Roof Repair Compound

A thick, flexible repair mastic for repairs to roofs and gutters.

IKOpro Universal Roof Repair Compound is a mastic reinforced with fibres for repairs to roofs.

It is ready to use within a wide range of temperatures and forms an ideal preparation for further large scale work by repairing cracks, tears and other damage.

Use

- For felt and mastic asphalt roofs
- Can also be used for filling and sealing cracks and gaps in concrete structures, repairs to leaking and damaged gutters, for sealing between laps and around bolt holes on sheeted roofs.

Application

- All surfaces must be clean, dry and free from grease, oil, dirt and other contaminants which may impair adhesion
- Apply IKOpro Universal Roof Repair Compound using a trowel or filling knife. Overfill holes slightly and force the material well into any cracks
- Spread a layer of mastic at least 3mm thick to extend 50mm from the repair in all directions onto a sound surface
- For large cracks, greater than 3mm wide, fill as above but then bed in a reinforcing strip of woven glass fibre scrim or polyester mesh to cover the crack, overlapping by 50mm all round and then cover this with a further 2mm thick layer of IKOpro Universal Roof Repair Compound.

Coverage

- The coverage is dependent on the depth and severity of the damage to be repaired. As a guide the coverage is approximately 0.3 m²/kg at 3mm thick.



Product	Size	Code
IKOpro Universal Roof Repair Compound	1kg	MW686101
	2.5kg	MW686102
	5kg	MW686105

Repair & Waterproofing

IKOpro Emergency Roof Repair

Stops sudden & unforeseen leaks in roof felt and gutters.

IKOpro Emergency Roof Repair has been specially formulated to stop leaks in roofs and gutters in emergency situations, even under the most severe weather conditions, helping to prevent extensive damage to your home, enabling more time for a permanent repair to be planned.



Use

- For felt, masonry and metals roofs such as zinc, copper and lead.

Application

- All surfaces must be clean and free from grease, oil, dirt and loose deposits such as leaves, snow or excess water
- Immediately apply IKOpro Emergency Roof Repair to the problem area using a filling knife or trowel and press firmly
- Leave exposed to the elements, so that the curing process can take place satisfactorily
- Once weather conditions improve, it is recommended that the problem area is treated with one of IKO quality waterproofing membranes or roof repair products to provide further long-term protection.

Coverage

- The coverage is dependent on application, severity of leak or crack being filled.

Product	Size	Code
IKOpro Emergency Roof Repair	2.5kg	MW942100
	5kg	MW942105

IKOpro Rapid Repair Spray

**Seal for roof coverings,
gutters and drain pipes.**

IKOpro Rapid Repair Spray is a spray applied mastic formulated to provide rapid sealing on most surfaces, even when damp.



Use

- For most surfaces including bitumen felt, fibre cement, tiles, slates, asphalt, metal, wood and most plastics
- Not suitable for use on polystyrene.

Application

- All surfaces must be clean, dry and free from grease, oil, dirt and other contaminants which may impair adhesion
- Shake well before use. The ideal spraying temperature is between 15°C and 20°C. Lower temperatures will delay drying
- Spray across the repair area from a distance of 5cm to 30cm in several light even coats, applying beyond the area to be sealed
- It is intended that once IKOpro Rapid Repair Spray has cured, one of IKO's quality roofing membranes or roof repair products is installed for long-term maintenance.

Coverage

- One 500ml can will cover up to 0.15 m² depending on application thickness.

Product	Size	Code
IKOpro Rapid Repair Spray	500ml	MW942500

Repair & Waterproofing

IKOpro Roofcrl

High-performance, instant roof repair acrylic compound, ideal for emergency repairs and general maintenance.

IKOpro Roofcrl can be used on new and refurbishment projects and contains fibres which provide superior durability and life expectancy.*

IKOpro Roofcrl can extend the life of a flat roof by over 10 years.

* IKOpro Roofcrl cannot be used on PVC materials.



Use

- No primer required in most circumstances
- Can be applied in damp conditions
- Flexible
- Instant waterproofing
- Ideal for areas subject to ponding
- Exceptional weather resistance and long lasting.

Application

- Existing deck substrates should be assessed for structural strength, falls and drainage provision
- All surfaces should be sound and free from loose chippings, dirt, rust and any other surface contaminants that may affect adhesion
- Remove organic matter with **IKOpro Algae and Fungi Remover** (pg 9)
- Make good all flashings, holes, and major defects in the surface
- For best results apply during dry conditions
- Damp surfaces can be coated, but standing water should be removed
- Apply liberally using a stiff brush
- Pay particular attention to areas that are split or cracked
- Splits larger than 10mm wide may need additional reinforcement.

Coverage

- 1kg/m² on smooth surfaces, extending to 2kg/m² on rougher surfaces.

Product	Size	Code (Black)	Code (Grey)	Code (White)
IKOpro Roofcrl	1kg	MW943601	MW943701	-
	5kg	MW943605	MW943705	MW943805
	20kg	MW943620	MW943720	-

IKOpro Solvent Free Waterproofer

Bitumen based emulsion for the protection of roofs.

IKOpro Solvent Free Waterproofer is an easy to use bitumen based emulsion for roofs and can be used as a waterproof coating on asphalt, fibre cement sheeting, concrete and bituminous roofing membranes. It is designed to extend the life of an existing waterproofing.



Solvent Free



Use

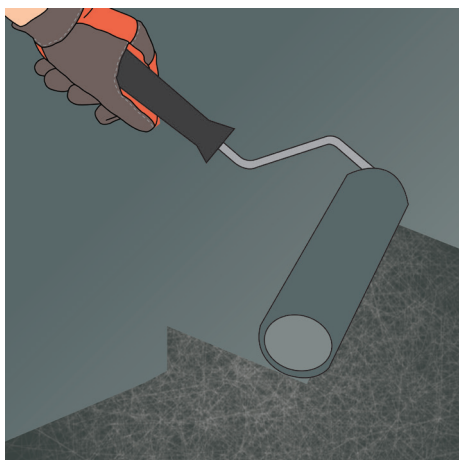
- For waterproofing coating on asphalt, fibre cement sheeting, concrete and bituminous roofing membranes to extend the life of existing waterproofing.

Application

- All surfaces must be clean, dry and free from grease, oil, dirt and loose material including chippings
- Treat and remove any algae and fungi using **IKOpro Algae and Fungi Remover** (pg 9)
- Any blisters and cracks in the roof surface should be repaired using **IKOpro Roof Repair Compound** (pg 17)
- Splits larger than 10mm wide may need additional reinforcement
- All surfaces should be primed using **IKOpro Quick Dry Bitumen Primer** (pg 6) and allowed to dry
- Apply a minimum of 2 coats of IKOpro Solvent Free Waterproofer with a brush or roller
- Each coat must be allowed to dry for at least 24 hours before applying the next
- Do not use when rain or freezing conditions are forecast during the 24 hour drying period.

Coverage

- 1.5 m²/litre/coat (0.67 L/m²/coat).



Product	Size	Code
IKOpro Solvent Free Waterproofer	2.5L	MW941802
	5L	MW941805

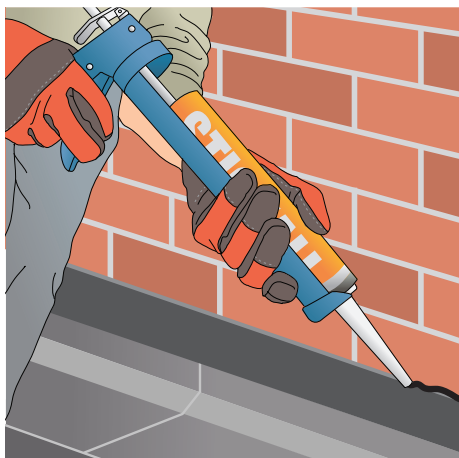
Repair & Waterproofing

IKOpro Stickall

Long-lasting sealant adhesive for the professional user.

IKOpro Stickall is a dense, all weather, bituminous sealing adhesive that remains plastic under normal temperatures and adheres well to most building surfaces.

It is a multi-purpose product with high permanent adhesive strength, good UV stability and resistance to sagging at high temperatures.



Use

- Sealing mastic in conjunction with IKOfash
- Used to seal cracks and blisters on felt roofs, as a sealant along the edges of ridge tiles and between laps or around bolt holes on sheeted roofs
- Around roof lights and for the repair of gutters
- Finishing mastic for sealing of rainwater pipes, chimneys and all sorts of roof penetrations
- Cold applied adhesive for additional bonding of bituminous shingles
- Sealing corrugated sheet accessories.

Application

- All surfaces must be clean, dry and free from grease, oil, dirt and loose material
- Apply IKOpro Stickall to the selected area
- Application temperature should be between 5°C and 30°C.

Coverage

- The coverage is dependent on the depth and severity of the damage to be repaired; around 3 m for a 1 x 1 cm grout.

Product	Size	Code
IKOpro Stickall	310ml	02401671

Finish & Protection

IKOpro High-Performance Waterseal

Breathable, transparent waterproofer for use on exterior surfaces to protect against the elements.

IKOpro High-Performance Waterseal penetrates deep into the surface providing exceptional protection against water absorption and frost damage.



Use

- For exterior surfaces such as brick, concrete, stonework, render and timber
- New render and mortar should be allowed to weather for two months before application
- Not effective against water pressure or masonry below ground level.

Application

- All surfaces must be clean, dry and free from grease, oil, dirt and loose material
- If surface is to be washed down do not use wetting agents or detergents
- Apply liberally over the whole area by means of a soft brush, starting at the top and working downwards
- One application is normally sufficient to give a completely effective treatment, but on very porous surfaces apply a second coat before the first has dried.

Coverage

- 2-4 m²/litre per coat depending on porosity of substrate.

Product	Size	Code
IKOpro Waterseal	2.5L	MW942900
	5L	MW943100

Finish & Protection

IKOpro Solar Reflective Aluminium Paint

Coating suitable for the protection of roofs against the effects of UV.

IKOpro Solar Reflective Aluminium Paint is a bituminous aluminium coating which can be applied to a wide range of substrates to protect against the effects of UV. The solar reflective coating gives good heat and light reflective properties, reducing solar heat gain on dark coated roofs and similar surfaces.



Use

- For bitumen membranes, bitumen coatings and metal
- Not suitable for application to mastic asphalt roofs.

Application

- All surfaces must be clean, dry and free from grease, oil, dirt and loose materials. Must be stirred thoroughly before use and frequently during application, preferably with a mechanical paddle stirrer to ensure an even distribution of the aluminium pigment. Ensure the paddle stirrer touches the bottom of the tin to agitate all the aluminium pigment. A minimum of 10/15 minutes stirring is required
- Apply in an even coating using a brush or roller at the recommended coverage rate. To ensure maximum durability and reflectivity two coats should be applied
- Allow the first coat to dry thoroughly (approximately 24 hours) before applying the second. Drying times will be extended in cold, damp conditions or if the coating is applied too thickly. Do not apply when rain is imminent or the surface temperature is below 5°C
- To ensure maximum continuing performance and reflectivity, surfaces must be repainted every 3 to 5 years.

Coverage

- Smooth surfaces: 6-8 m²/litre per coat. Coverage rates will be reduced on rough surfaces such as mineral surfaced felt.

Product	Size	Code
IKOpro Aluminium Paint	5L	MW943205
	25L	MW943219

IKOpro Black Bitumen Paint

Protective paint for use on external metal, concrete and brickwork.

IKOpro Black Bitumen Paint is an all purpose product which is ideal for providing a waterproof finish to outdoor constructions.



Use

- For all types of concrete and brickwork, construction plinths, septic tanks, drainpipes, wooden garden posts, concrete, metal, reservoirs, railway sleepers and drainage channels
- Ideal protection of all materials in contact with groundwater.

Application

- All surfaces must be clean, dry and free from grease, oil, dirt and loose materials
- IKOpro Black Bitumen Paint is ready for use and should not be thinned
- IKOpro Black Bitumen Paint is not rust inhibitive. Prime iron and steel with a suitable rust inhibitive primer
- New galvanised surfaces should be roughened first
- Apply a minimum of two coats by brush. Allow each coat to dry (normally 2-4 hours depending on weather conditions) before applying the next. Do not apply when surface temperature is below 5°C.

Coverage

- Metal Surfaces: 8-10 m²/litre per coat.
Concrete, fibre cement etc: 4-6 m²/litre per coat
These figures will vary depending on the porosity of the surface.

Product	Size	Code
IKOpro Black Bitumen Paint	1L	MW686431
	2.5L	MW686432
	5L	MW686435
	22.5L	MW686437

Finish & Protection

IKOpro Synthaprufe Original

Rubberised bitumen emulsion for protection of floors and walls against penetrating damp.

IKOpro Synthaprufe Original is a high-performance brush applied damp proofing emulsion containing synthetic rubber latex which provides a waterproof, black elastomeric membrane.

A low odour emulsion with exceptional flexibility and resistance to cracking. IKOpro Synthaprufe Original performs even at low temperatures.



Use

- As a damp proof membrane on solid concrete floors
- For damp proofing of interior masonry wall surfaces
- To protect retaining wall structures.

Application

- Consult IKO technical datasheet for guidelines on specific waterproofing applications
- Stir IKOpro Synthaprufe Original well and apply by brush evenly and in one direction
- When it is completely dry it should be covered with a minimum 50mm sand/cement floor screed
- Allow to dry thoroughly before subsequent coats are applied
- Do not apply in wet weather or when rain or frost is likely. Always ensure good ventilation
- Unsuitable for ponds or other aquatic applications.

Coverage

- Floors, 1st coat 1 m²/litre, 2nd coat 1.5 m²/litre
- Walls, 2 m²/litre (per coat).

Product	Size	Code
IKOpro Synthaprufe Original	5L	MW686605
	25L	MW686620

IKOpro Synthaprufe LAC

Rubberised waterproofing liquid for use as a damp proof membrane and water repellent coating.

IKOpro Synthaprufe LAC is a high-performance waterproofing liquid used as a damp-proof membrane and water-repellent coating, prior to the erection of masonry.

A cold-applied bitumen and solvent mixture, once applied, dries to form a waterproof membrane.



Use

- For waterproofing foundations, retaining walls, abutments, steel columns, beams, lintels and structures where cladding forms the outer leaf
- Compatible, when cured, with all of IKO Hyload High-Performance Damp Proof Course range.

Application

- Consult IKO technical datasheet for guidelines on specific waterproofing applications
- All surfaces must be clean, dry and free from grease, oil, dirt and loose materials
- Concrete surfaces should be brushed or floated, masonry should be stable and flush pointed
- Metal surfaces must be suitably prepared and primed with a rust inhibitive primer
- Any hollows in the structure must be filled to an even smooth finish with cement mortar and all sharp projections removed
- Apply IKOpro Synthaprufe LAC with a stiff brush and work into the surface
- When it is completely dry it should be covered with a minimum 50mm sand/cement floor screed.

Coverage

- Metal surfaces, 1st coat 2.5 m²/litre, 2nd coat 2.5 m²/litre
- All other surfaces, 1st coat 1.5 m²/litre, 2nd coat 2.5 m²/litre surface.

Product	Size	Code
IKOpro Synthaprufe LAC	5L	MW686615
	25L	MW686617

Finish & Protection

IKOpro Synthaprufe Trade

Waterproof rubberised bitumen emulsion.

IKOpro Synthaprufe Trade is easy to apply, for damp proofing of concrete floors, foundations and masonry walls.

IKOpro Synthaprufe Trade is cold applied with a brush, making it an easy and cost effective solution.



Use

- As a damp proof membrane on solid concrete floors
- For damp proofing of interior masonry wall surfaces
- To protect retaining wall structures.

Application

- Consult IKO technical datasheet for guidelines on specific waterproofing applications such as; damp proofing floors, damp proofing walls and on external retaining walls
- The substrate needs to be sound, clean and grease-free
- Stir IKOpro Synthaprufe Trade well and apply by brush evenly and in one direction.

Coverage

- Floors: 1st coat 1 m²/litre, 2nd coat 1.5 m²/litre
- Walls: 2 m²/litre (per coat).

Product	Size	Code
IKOpro Synthaprufe Trade	2.5L	MW943902
	5L	MW943905
	25L	MW943925

IKOpro Paving & Patio Protector

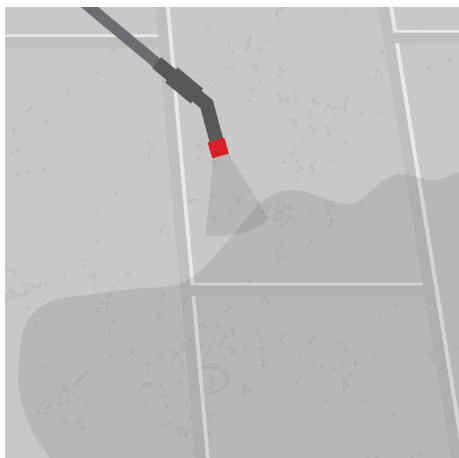
Solvent-free, water based protection for paving and patios.

IKOpro Paving and Patio Protector is a colourless, solvent-free, water based sealant, designed to protect paving and patios against most liquids, oil and grease.

It stops the growth of moss and other micro-organisms, reducing decolouration while allowing the surface to breathe. It should not be used on non-porous substrates, such as marble or blue stone.



Solvent Free



Use

- For use on porous substrates such as concrete, stone and brick.

Application

- All surfaces must be clean, dry and free from grease, oil, dirt and loose material
- Destroy any algae and fungi with **IKOpro Algae and Fungi Remover** (pg 9), and repair any weathered joints
- Apply with a brush, roller or low pressure sprayer or airless gun (open to 0.025 inch). Application temperature should be between +10 and +35°C. The protector should not be applied during periods of rain and frost.

Coverage

- 5 litres covers between 1.25 to 5 m².

Product	Size	Code
IKOpro Paving & Patio Protector	5L	MW943400

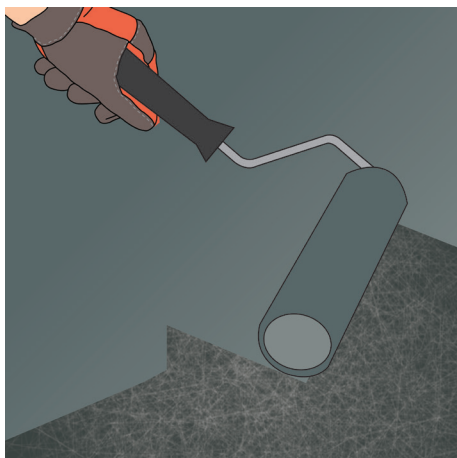
Finish & Protection

IKOpro Roof Protector

One coat solvent-free, waterproof coating for flat and pitched roofs.

IKOpro Roof Protector can be used on bituminous membranes, fibre-cement, bricks, tiles, galvanized surfaces, zinc and glazings.

It is suitable for refurbishing failing roofs and provides a one coat seamless, durable, waterproofing membrane that repairs and seals roofs, once dry. IKOpro Roof Protector can extend the life of a roof by up to 10 years.



Solvent Free



Use

- Ideal for flat and pitched roofs
- One coat only
- Extends life expectancy of the roof by up to 10 years.

Application

- Surfaces must be sound, clean and free from grease and loose material
- Destroy any algae and fungi with **IKOpro Algae and Fungi Remover** (pg 9)
- The substrate can be slightly wet during application
- Apply with a brush, roller or airless spray-gun, diluted with maximum 5% water in dry weather and at a temperature above +5°C
- Should not be applied in damp weather or when it is likely to rain
- Once applied, the surface must be protected against rain and frost until dry.

Coverage

- 1 m²/litre in one or two coats.

Product	Size	Code
IKOpro Roof Protector	1L	MW943501
	2.5L	MW943502
	5L	MW943505

Other products available from IKO

Hyload Below Ground Structural Waterproofing

- Tanking Membranes
- Protection Boards
- Wall Drainage Systems.

Hyload Above Ground Structural Waterproofing

- High-Performance DPC's
- Insulated DPC
- Damp Proof Membranes
- Preformed Cloaks.

Flat & Pitched Roofing

- High-Performance Flat Roofing Systems
- Traditional Flat Roofing Systems
- Cold Applied Roofing Systems
- Lead-Free Flashing
- Pitched Roof and Underslating Membrane Systems
- Shingles & Shed Felt.

IKOtex Weed Control and Landscape Fabrics

- Weed control fabric for basic gardening applications
- Professional weed control membrane for use under block paving, soft landscaping and decking
- Heavy duty path, patio and driveway stabiliser.

**IKO PLC**

Appley Lane North
Appley Bridge
Wigan
Lancashire WN6 9AB
www.ikogroup.co.uk

**Member of the
IKO Group**

Sales Support

t: 01257 256 865
f: 01257 251 855
sales.uk@iko.com

Technical Services

t: 01257 256 864
technical.uk@iko.com

Northern Ireland

14 Sanda Road
Whitehouse, Newtownabbey
County Antrim BT37 9UB

t: 028 9086 7079
f: 028 9086 9079
waterproofing@iko-ni.com
www.iko-ni.com

Ireland

502 Northwest Business Park
Ballycoolin
Dublin 15

t: 01 8855 090
f: 01 8855 858
waterproofing@iko.ie
www.iko.ie

September 2018

Whilst every care is taken to see that the information given in this literature is correct and up to date it is not intended to form part of any contract or give rise to any collateral liability, which is hereby specifically excluded. Intending purchasers of our materials should therefore verify with the company whether any changes in our specification or application details or otherwise have taken place since this literature was issued.

